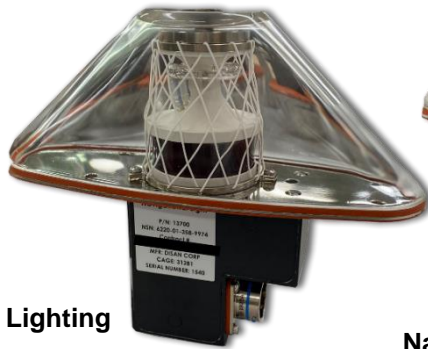
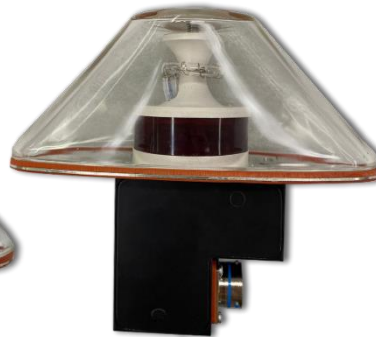


# NAVIGATIONAL LIGHTING SYSTEMS

Disan Engineering Corp. is a leading manufacturer of military and commercial aircraft lighting systems, FAA ground lighting systems, switch assemblies, power supplies and spares. Dynatech is the **EXCLUSIVE DISTRIBUTOR** of Disan's Navigational Lighting Systems worldwide.



Navigational Lighting  
P/N 13700  
NSN 6220-01-358-9974



Navigational Lighting  
P/N 11150  
NSN 6220-01-291-4266



Sequenced Flasher for  
MALSR and REIL  
Runway Lighting System  
P/N 44D0551  
NSN 6210-01-205-0493

*P/N 13700 is alternate replacement for:*

Company	Part Number
Lockheed Martin	ZLA003849-00
Milpar	233-1002-001 500-1002-01
Goodrich Lighting	2LA003849-00 2LA003849-01



- Two-color strobe light designed specifically for the belly of the aircraft and vertical stabilizer
- Rugged aerodynamic design for platforms: **C-130, F-15, AS-130, KC-135 and E3A**
- Unique strobe light flashes intense white or **red**

Part Number	Description	NSN	Platform	Application
12550	Navy Light	5850-00-501-1455	Ship-Ship lighting	Multipurpose; Multiple ships; Industry name "Symbol 106.1"
13700	NAVIGATIONAL LIGHT	6220-01-358-9974	C-130; F-15; AS-130; KC-135, E-3A	
11150	NAVIGATIONAL LIGHT	6220-01-291-4266	C-130; F-15; AS-130; KC-135, E-3A	
12180	SWITCH ASSY, TILT	5930-01-307-7778	FAA Lighting - PAPI	PAPI - Precision Approach Path Indicator: Tilt switch monitors the aiming slope of the lamp housing of the PAPI. If the aiming slope is altered by more than 1/10th of a degree, the tilt switch disables the system and registers the error.
10160	2-BOX VASI System		FAA Lighting - VASI	2-box VASI system contains 2 ea VASI lamphousings, 1 ea power control assembly, 1 ea aiming bar assembly.
10160	4- BOX VASI System		FAA Lighting - VASI	4-box VASI system contains 2 ea - 2-box VASI systems. The number of boxes is dependant upon the angle of approach and terrain.
10150FG	LAMP Housing, VASI	6210-01-314-1356	FAA LIGHTING - VASI	SUB COMPONENT OF FULL VASI SYSTEM
10142	SWITCH ASSEMBLY	5930-01-578-4161	FAA Lighting - VASI	VASI - Visual Approach Slope Indicator: Tilt switch monitors the aiming slope of the lamp housing of the VASI. If the aiming slope is altered by more than 1/10th of a degree, the tilt switch disables the system and registers the error. The VASI version of the tilt switch assembly controls a two-box VASI system.
10276	Circuit Card Assembly	5998-01-141-4364	FAA - VASI spare	This Circuit Card Assembly (CCA) is part of the VASI power control system. The board is sold as a spare or replacement.
10174	Power Supply	5998-01-141-4365	FAA - VASI spare	This Circuit Card Assembly (CCA) is part of the VASI power control system. The board is sold as a spare or replacement.
10166	Panel, Relay	6110-01-306-2932	FAA - VASI spare	This relay panel is a spare or add-on item in the VASI lamp housing.
10198	PHOTO CELL	6210-01-120-5684	FAA LIGHTING - VASI	SPARE for VASI system.
10159	FOOT, Mounting	6210-01-150-4615	FAA LIGHTING - VASI	SPARE for VASI system.
10240	Extender Board	9062-00-101-9679	FAA Lighting - VASI	SPARE for VASI system.
10147	TILT SWITCH, ASSEMBLY W/ RELAY Angle Mounting		FAA LIGHTING- VASI	SPARE for VASI system.
10182	Bracket		FAA LIGHTING- VASI	SPARE for VASI system.
10243	CLIP 10152-1	6250-01-136-7079	FAA Lighting - VASI	SPARE for VASI system.
10180	Meter 0-10 Ampere	6625-01-101-6934	FAA Lighting - VASI	SPARE for VASI system.
10190	Aiming Inst. Set	6625-01-145-7094	FAA LIGHTING- VASI	This item is used to set the approach angle of the VASI lamphousing.
10218	FUSE & TERMINAL ASSEMBLY		FAA LIGHTING- VASI	SPARE FOR VASI SYSTEM
10960	Power Supply	6130-01-101-2582	FAA - MALSR	24-volt DC power supply for use on runway lighting controller - MALSR; FAA orders 50 or more units with each PO. Disan builds approximately 250 per year.
44D0551	LGTA (Flasher Assy)	6210-01-205-0493	FAA GROUND LIGHTING	SPARE for Sequenced Flashing Lights used in MALSR and REIL runway lighting systems.
AE10231A	Inductor	5950-01-008-3155	FAA - MALSR	L-201 in MALSR system
11510	Top Casting W/Prism		FAA - MALSR	Spare item that supports the semi-flush flashing light in the MALSR system. The top casting w/prism is part of the housing that is installed in the runway for the flashing light.
100D0139	SFLII FLANGE		FAA - MALSR	Spare item that supports the semi-flush flashing light in the MALSR system. The flange is part of the housing that is installed in the runway for the flashing light.
44D0596	SFLII Cylinder		FAA - MALSR	Spare item that supports the semi-flush flashing light in the MALSR system. The cylinder is part of the housing that is installed in the runway for the flashing light.
24600-A	LIGHT GUN	6230-01-493-7433	FAA AIR TRAFFIC CONTROL TOWER GROUND TO AIR LIGHTING	Contains 1ea light gun, 2ea 24626-A batteries, 1ea 24623-A recharger assembly, extra lamp, hardware, and operating instructions. Optional carrying case available for purchase.
24626-A	BATTERY, STORAGE	6140-01-581-3278	FAA- AIR TRAFFIC CONTROL TOWER GROUND TO AIR LIGHTING	SUB COMPONENT OF P/N: 24600-A SIGNAL LIGHT GUN. This is a Li-Ion battery.
24623-A	RECHARGER ASSEMBLY		FAA- AIR TRAFFIC CONTROL TOWER GROUND TO AIR LIGHTING	SUB COMPONENT OF P/N: 24600-A SIGNAL LIGHT GUN